

BACKUP CLEANER MANUAL



Keep Lightroom's Automatic Backups
under control

Introduction.....	1
Requirements	1
Contact and Support.....	1
Legal Stuff.....	1
What's Included	2
New Commands	2
Installation.....	3
Windows	3
<i>Automatic Installation.....</i>	<i>3</i>
<i>Manual Installation.....</i>	<i>3</i>
OSX (Mac).....	3
Setting up Lightroom	4
<i>Enter Your Licence Key.....</i>	<i>4</i>
<i>Using the Plugin.....</i>	<i>4</i>

INTRODUCTION

This is a straightforward plug-in which will automatically delete old backups made by Lightroom when they are no longer needed, saving your disk space.

REQUIREMENTS

- Lightroom 3 or newer, including CC versions.
- Mac or PC.

CONTACT AND SUPPORT

You can get support or ask questions from the website:

<http://www.lightroom-plugins.com/contact.php>

LEGAL STUFF

This plug-in is not specifically endorsed by Adobe Inc®.

The purpose of this plugin is to remove files. By installing the plugin you acknowledge that files are going to be removed. We can not be held responsible for the loss of any information as a result of this plugin's actions. It is installed in a 'safe' mode, where nothing will be erased until you explicitly tell it to, and it is your responsibility to ensure that the correct folders have been identified by the plugin.

WHAT'S INCLUDED

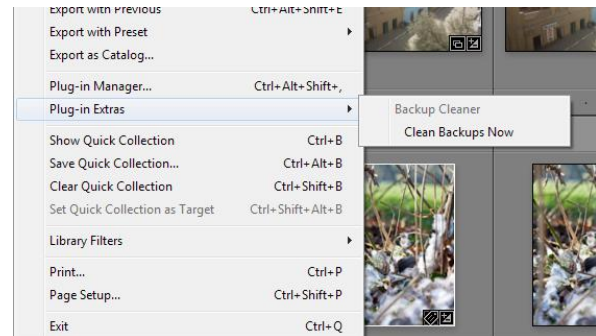
NEW COMMANDS

One new command has been added to the “File” menu in Lightroom:

CLEAN BACKUPS NOW

This removes any backups in this catalog's backup area which are no longer needed according to the rules you have set in the Plugin Manager.

It is exactly the same operation that happens when Lightroom starts up.



INSTALLATION

This plug-in doesn't add any new fields to your Lightroom database, but you will still be asked whether you want to upgrade your catalog when it is first installed. This is a necessary side-effect of the installation but, despite what Lightroom says, no changes are made.

WINDOWS

AUTOMATIC INSTALLATION

The easiest way to install on Windows is to use the MSI installer. Simply double-click and run through the prompts that appear.

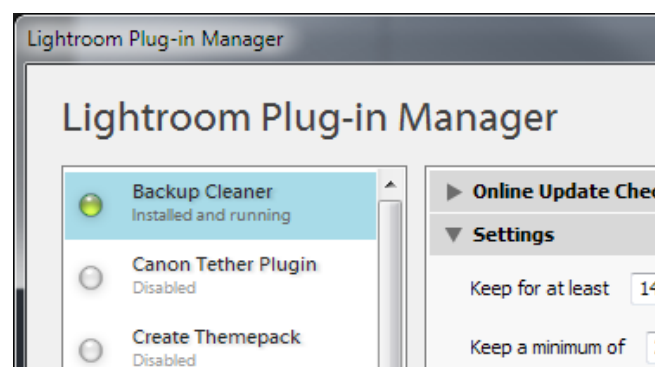
MANUAL INSTALLATION

If you prefer to install manually, download the ZIP file instead of the MSI. When it has downloaded, follow the instructions below for installing on the Mac; the steps are identical on Windows.

OSX (MAC)

1. Download the ZIP and extract it to your desktop. You should see a folder called “**RemBackups**” (Mac) or “**RemBackups.lrplugin**” (Windows), containing the plug-in.
2. Move this folder anywhere you like.
3. Open Lightroom’s Plugin Manager from the File menu, and click the “Add” button at the bottom of the list.
4. Use the file dialog that appears to select the plugin (ending in **.lrplugin**).

Check that a plug-in called “Backup Cleaner” is shown as “Installed and running”.



SETTING UP LIGHTROOM

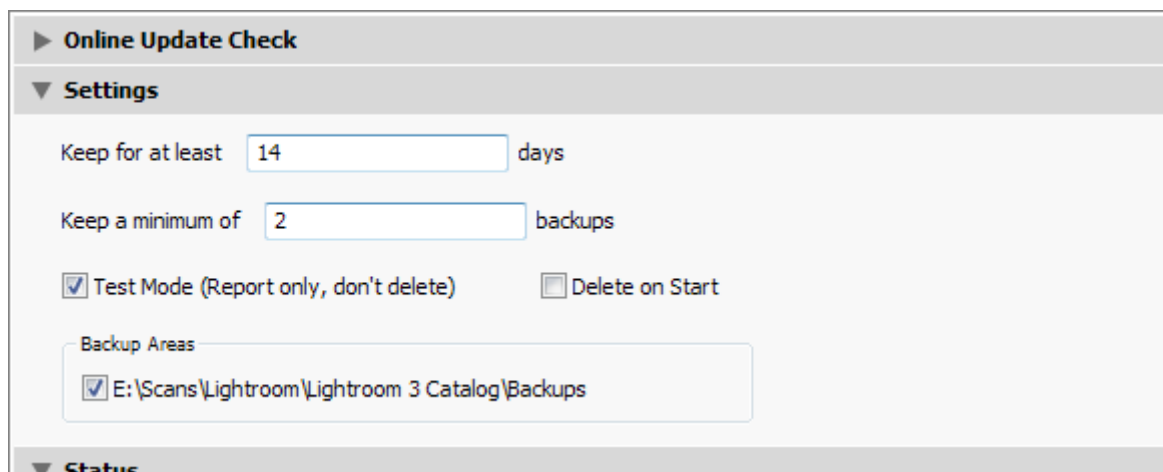
ENTER YOUR LICENCE KEY

If you have bought the plug-in, you should receive a licence key in an email. Without this, the plug-in will only show you which backups it would remove instead of actually removing them. To enter the licence key, simply copy and paste it and your e-mail address from the email to the box in the Plugin Manager when the Backup Cleaner plugin is selected.

USING THE PLUGIN

The plugin works silently in the background, there is no need to do anything after it is configured. By default, it is set to “Test” mode, where it will show you what would be removed but will not actually remove anything. This is to avoid having anything deleted that you may want to keep.

Before it is used for the first time you will need to set some options in the Plugin Manager.



Lightroom catalog backups are stored in a folder that you choose either in the “Catalog Settings” dialog (on the Edit menu) for Lightroom 2, or in the Backup dialog itself for Lightroom 3 or higher. This folder is picked up by the plugin and scanned for old backups. A backup is any folder inside the catalog's backup destination which contains only “.lrcat” files.

If the date of the “.lrcat” file in each backup folder is older than the limit you give in the dialog above, it is marked to be deleted.

If you set “Keep a minimum...”, then this limit applies to each catalog you back up. For example, if you have two catalogs which Lightroom backs up then each catalog would have 2 backups kept if you set this value to 2.

The “Test Mode” checkbox tells the plugin to only report what would be deleted, but not to actually delete anything. Where backup folders *are* deleted, they are moved to the Recycle/Trash bin rather than deleted outright. Test mode affects both the automatic removal on startup *and* the “Remove Backups Now” command on the File menu.

The “Delete on Start” control states whether Lightroom will remove old backups for the current catalog automatically and silently whenever it starts.